

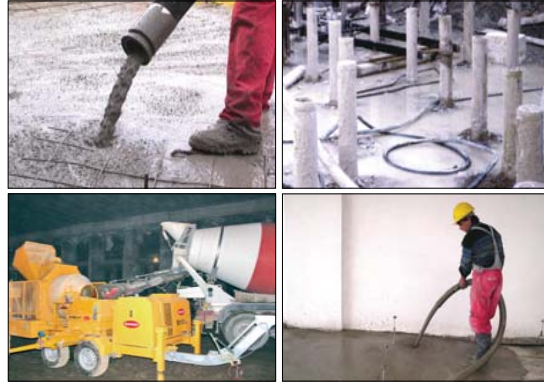


Pumping  
Spraying  
Plastering

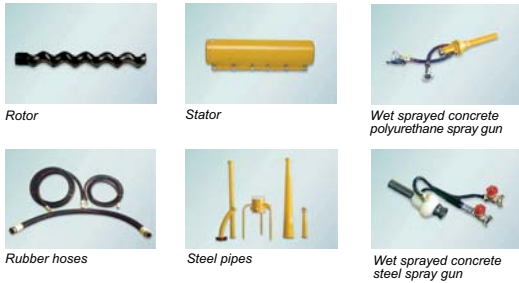
**B100XP**  
Jobsite freedom

**B100XP**

Pumping Spraying Plastering



Accessories



Rotor

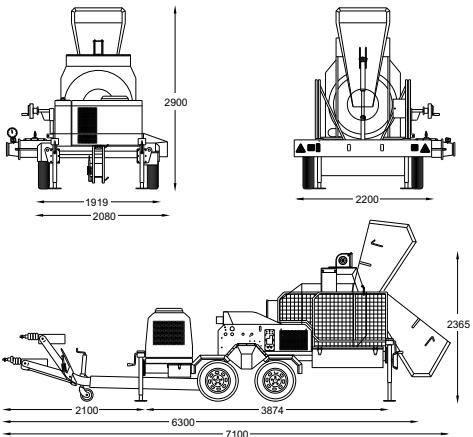
Stator

Wet sprayed concrete polyurethane spray gun

Rubber hoses

Steel pipes

Wet sprayed concrete steel spray gun



Technical data

**Hydraulic power pack**  
Diesel Lombardini CHD 2204 engine  
Hydraulic output  
Maximum hydraulic pressure  
Air compressor (optional)

37 kW - 50 HP  
114 l/min - 30 gal/min  
150 bar - 2175 psi  
400 l/min - 105 gal/min

**Screw pump**  
Maximum theoretical output \*  
Maximum theoretical pressure \*  
Maximum grain size \*\*\*  
Horizontal pumping distance \*\*  
Vertical pumping distance \*\*

250 l/min - 66 gal/min  
12 bar - 174 psi  
25 mm - 1 inch  
60 m - 200 ft  
20 m - 65 ft

**Additive screw pump (optional)**  
Theoretical variable output  
Maximum theoretical pressure

0-10 l/min - 2.64 gal/min  
28 bar - 406 psi

**Concrete mixer capacity**

350 l - 12 cubic feet

**Total weight B100 xp**

2600 kg - 5732 lbs

\* With 2L8 stator and rotor pressure: 25 bar (362 psi)  
horizontal distance : 60 m (200 ft)  
vertical distance : 30 m (100 ft)  
max grain size : 16 mm (0.62 inch)  
theoretical output : 170 l/min (44 gal/min)

\*\* Depends on material, consistency and hose diameter. Both distances cannot be reached simultaneously  
Consistency class: S4 (fluid)  
Slump range: 16 to 20 cm (6,3 to 7,9 inches)

\*\*\* Only under special circumstances. Contact technical department.

Bunker is a trademark from

**TEK.SP.ED.** s.r.l.

via G. Falcone, 91 - 80025 Casandrino (NA)

tel. +39 081 5053621 ; fax +39 081 8332973

info@bunker-teksped.com - www.bunker-teksped.com

Teksped srl retains the right to modify data anytime - © 2007 by TEK.SP.ED. - all rights reserved - Printed in Italy - 200503-0907/new-GB

Trailer unit with concrete mixer to mix and pump concrete, mortar and self-levelling screeds.



Ideal to pump concrete

**BUNKER** Pumping technologies

**BUNKER**



**Control panel**

It controls all functions in one panel in complete safety. Control leeds enable easy monitoring of the Diesel engine. The hour-counter helps you to plan work and to schedule routine maintenance.



**Electronic water meter**

Regulate the material mix with built in electronic water meter.



The B100xp pumping system is very easy and simple to set up and dismount.



**Pumping remote control**

A handy low voltage remote control with a long cable to start and stop the B100xp



**Compressor**

An air compressor (optional accessory) can be mounted on the hydraulic power pack and used for plastering and hose cleaning.



**Additive screw pump**

For shotcreting, you could use a pressurised tank for additive or an additive screw pump.



**The Diesel engine**

The hydraulic power pack is equipped with the powerful new and ecological Lombardini CHD 2204 engine with low fuel consumption.

**Pump, spray, inject**

The B100xp will pump concrete with aggregates up to 25 mm (1 inch), spray traditional mortar and fibre-reinforced mortar, self-levelling floor screed and light concrete with or without polystyrene, spray gunite, inject cement or special mixes into walls, piles and ties.

Get the work done easier with your B100 xp



Plastering



Mortar spraying on polystyrene panels with welded wire meshes



Spraying concrete



**B100XP**  
the innovative completely portable concrete mixing and pumping unit on wheels

The B100xp is a hydraulically-driven, trailer mounted concrete pump with progressive output and pressure regulation. Designed by Bunker to mix concrete or mortar directly on site helping builders to work faster and autonomously. This compact unit will reduce the number of machines you will need to use to get the job done.

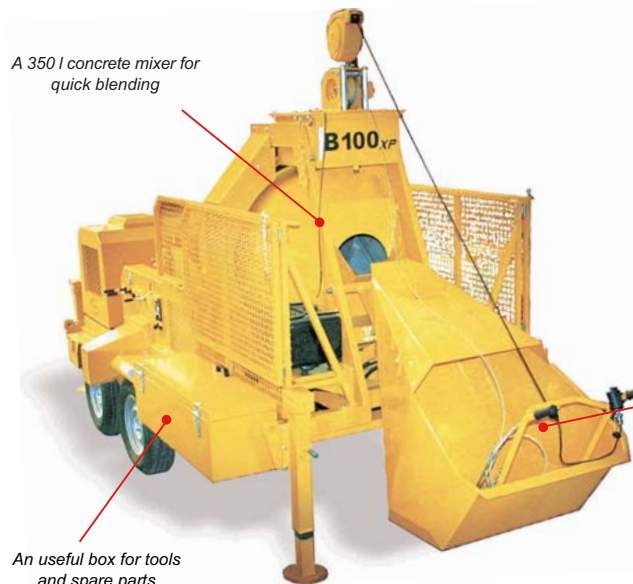
The steel chassis is supported by a sturdy twin axle where you'll find a 350 l (12 cubic feet) concrete mixer, a screw pump, a Diesel hydraulic power pack and all accessories that makes it a fully towable and compact unit.

The concrete mixer is equipped with a loading skip with a digital weighing machine and scraping device used for an accurate feeding of materials and quick loading.



B100 xp equipped with an Alko twin axle with overrun device

A 350 l concrete mixer for quick blending



An useful box for tools and spare parts



**Loading Skip**

Fitted with a digital weighing machine (optional) and scraping device for accurate and faster feeding of materials.

